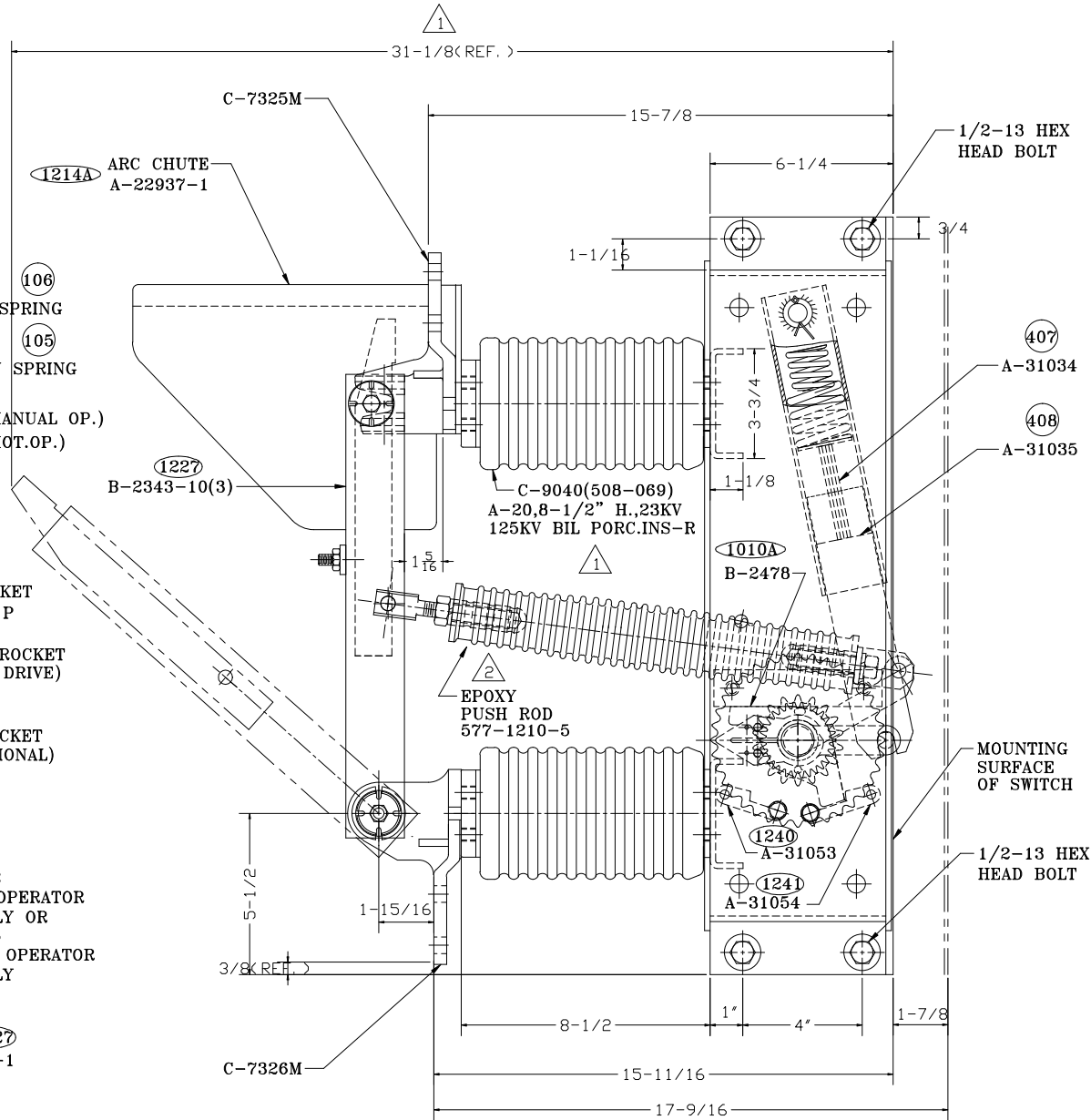


FRONT VIEW



SIDE VIEW

NOTES:

- 1- STOP BLOCK IS FIXTURE LOCATED & BOLTS TORQUED TO 115-120 LB-FT.
- 2- SPRING PINS MUST BE INSTALLED WITH SPLITS AT 90° TO SHAFT.
- 3- TOOLING CONTROLLED DIMENSIONS.
- 4- ALL HARDWARE TORQUED FOR GRADE 2 & 5, EXCEPT AS NOTED.

577-099

SHEET 1 OF 1

REVISIONS				DESCRIPTION OF OPERATION	CUST.		TITLE	STATION	LOCATION	FILE	H:\ENG\STD577\C-9224-2	S0#	C-9224-2	REV. 4
NO.	DATE	BY	REV.		NO.	DATE								
1	03/17/99	L. V.	1	THIS DRAWING AND ALL PREVIOUS ISSUES ARE THE SOLE PROPERTY OF THE POWERCON CORPORATION OF SEVERN, MARYLAND. NEITHER RECEIPT OF SAID DRAWING, NOR POSSESSION THEREOF, IMPLIES OR TRANSFERS ANY RIGHTS OR LICENCE TO USE THE DRAWINGS, OR THE SUBJECT MATTER, DESIGN, OR TECHNICAL INFORMATION SHOWN THEREON, OR ANY RIGHT TO COPY OR OTHERWISE REPRODUCE THIS DRAWING OR ANY PART THEREOF. NEITHER THIS DRAWING NOR ANY INFORMATION CONTAINED THEREIN, MAY BE COPIED, REPRODUCED OR OTHERWISE USED WITHOUT FIRST OBTAINING WRITTEN AUTHORIZATION OF THE POWERCON CORPORATION. PRINTS ARE LOANED SUBJECT TO RETURN UPON DEMAND, AND THE EXPRESS CONDITION THAT THEY WILL NOT BE USED IN ANY WAY DETRIMENTAL TO THE POWERCON CORPORATION.	ENGR.	07/26/95	23KV,125KV BIL,1200A,61KA MOM.(R.H.OPERATED)-40"W.UNIT							
2	06/20/96	NK.	2		DRWN.	07/26/95	INTERRUPTER SWITCH (REDUCED SIZE)							
3	09/11/96	L. V.	3		CHKD.	07/26/95	WITH CYCLOALIPHATIC EPOXY PUSH RODS .							
4	03/17/99	L. V.	4		APPD.	07/26/95								